

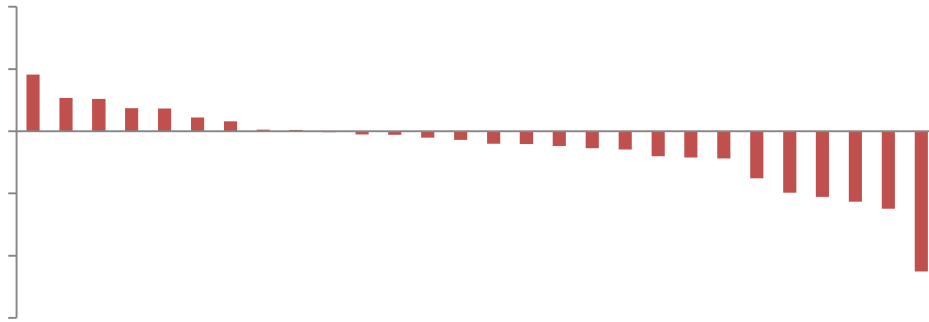
目 录

.....	2
.....	2
.....	2
.....	3
.....	3
.....	3
30	4
.....	4
.....	4
.....	5
30 A	5
.....	5
.....	6
1 2021 " "	6
2 7	7
3 2020	8
4 1.9 " "	8
5 " "	9
6 A 10 1	10

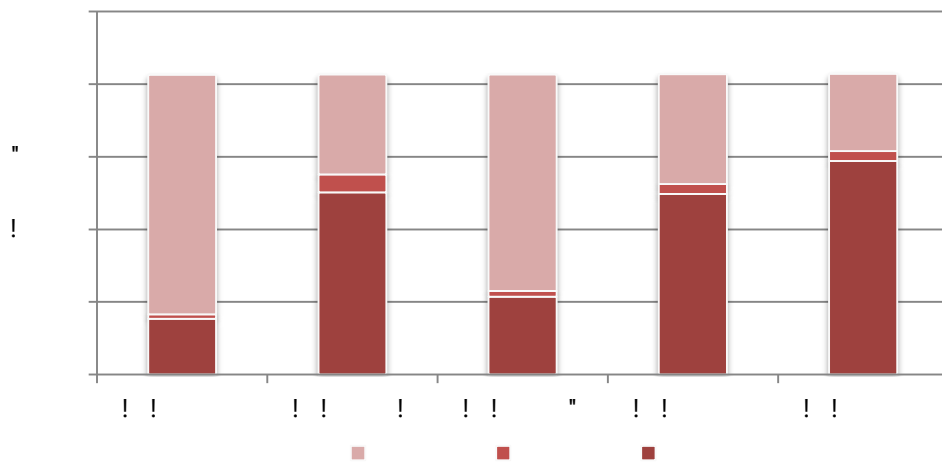
	3566.38	-0.10%
	15031.70	-1.88%
	10109.69	-2.03%
	3089.94	-1.93%
300	5458.08	-0.68%
	28573.86	2.50%
500	3768.25	-1.48%
(WIND 2021-1-11 2021-1-15)		

2021-1-11 2021-1-15 A

0.10% 3566.38 1.88% 15031.70
1.93% 3089.94



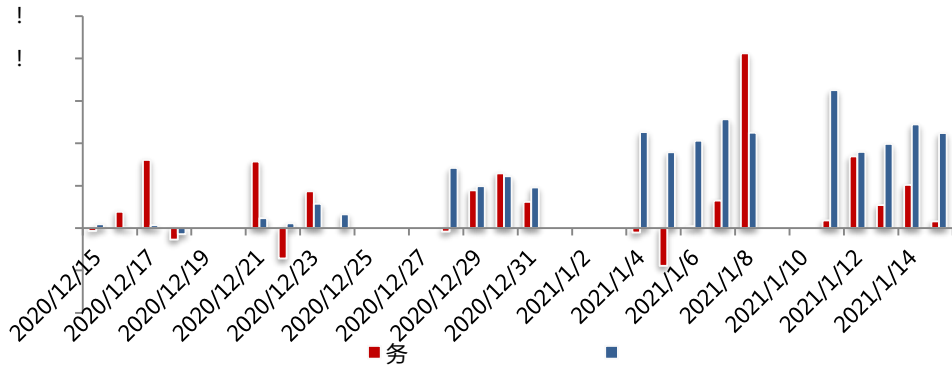
F 8 3 ! ! ! !



F 8 3 !! !!

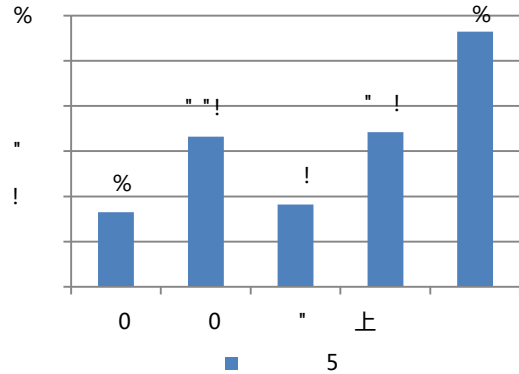
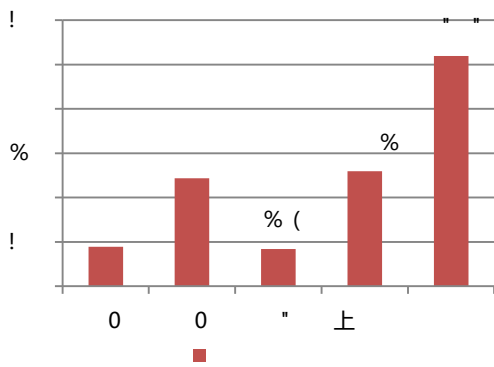
	179.59	702.13
	370.86	1357.30
	370.86	1357.30

F 8 3 !!



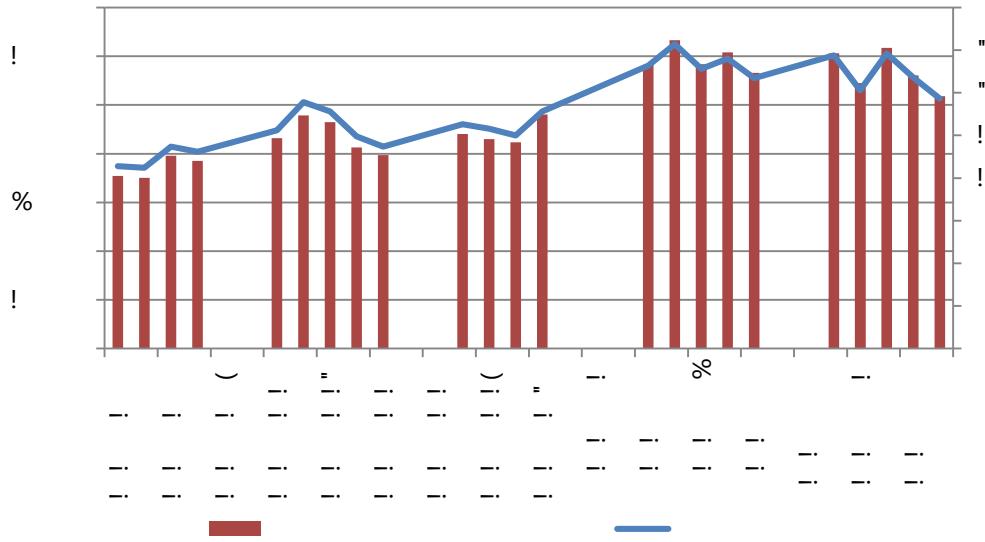
F 8 3 ! !

QFI I	24661.21	2.78%	3.76%
	24660.68	2.78%	3.76%
	0.5227	0.00%	0.0001%



F 8 3 ! !

30 A



F 8 3 ! !



CPI
CPI

" "

G20

2

7

2020

2020 6

7

2020

9.2

2019

0.9

11%

2019

1.4

17.5%

2020

" " 9.37 1%

3 2020

1 12 2020 12

M1 M2

" "

12 M2 10.1% 0.6

10.7% 12 M1 8.6%

1.4 5

M1

M1

2020 M2 1.4

19.6 2.8 34.86

9.2

6 "

20 30 "

4 1.9 " "

1 14 1.9 "

"



		600		1400	
			400		2000
	15		500	9	200
1.9	"		"		
	V			U	
				20	
			GDP		GDP
5	"	"			
		1	15		
					8
2020		8			
	2016	44.8%	28%		"
"					

6 A 10 1

2021 1 15

10 1

A " "

A

A

2015

2017 2019 A

MSCI A

2000 3500

2019 2020 A

2020 + 2

1.6 2016 2019 4

2021

A

A
